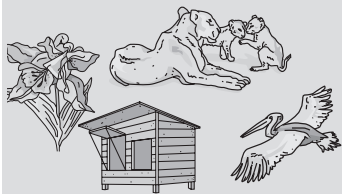


# Contents

<b>UNIT - 1</b>	<b>DIVERSITY</b>	<b>1</b>
1.1	<i>Living and Non-Living Things</i>	02
1.2	<i>Plants</i>	12
1.3	<i>Animals</i>	25
1.4	<i>Fungi and Bacteria</i>	34
1.5	<i>Materials</i>	44
1.6	<i>Model Examination Paper</i>	55
<b>UNIT - 2</b>	<b>CYCLES</b>	<b>68</b>
2.1	<i>Life Cycles of Plants</i>	69
2.2	<i>Life Cycles of Animals</i>	79
2.3	<i>Model Examination Paper</i>	92
<b>UNIT - 3</b>	<b>INTERACTIONS</b>	<b>104</b>
3.1	<i>Properties of Magnets</i>	105
3.2	<i>Making and Using Magnets</i>	117
3.3	<i>Model Examination Paper</i>	133
<b>Answers</b>		<b>147</b>



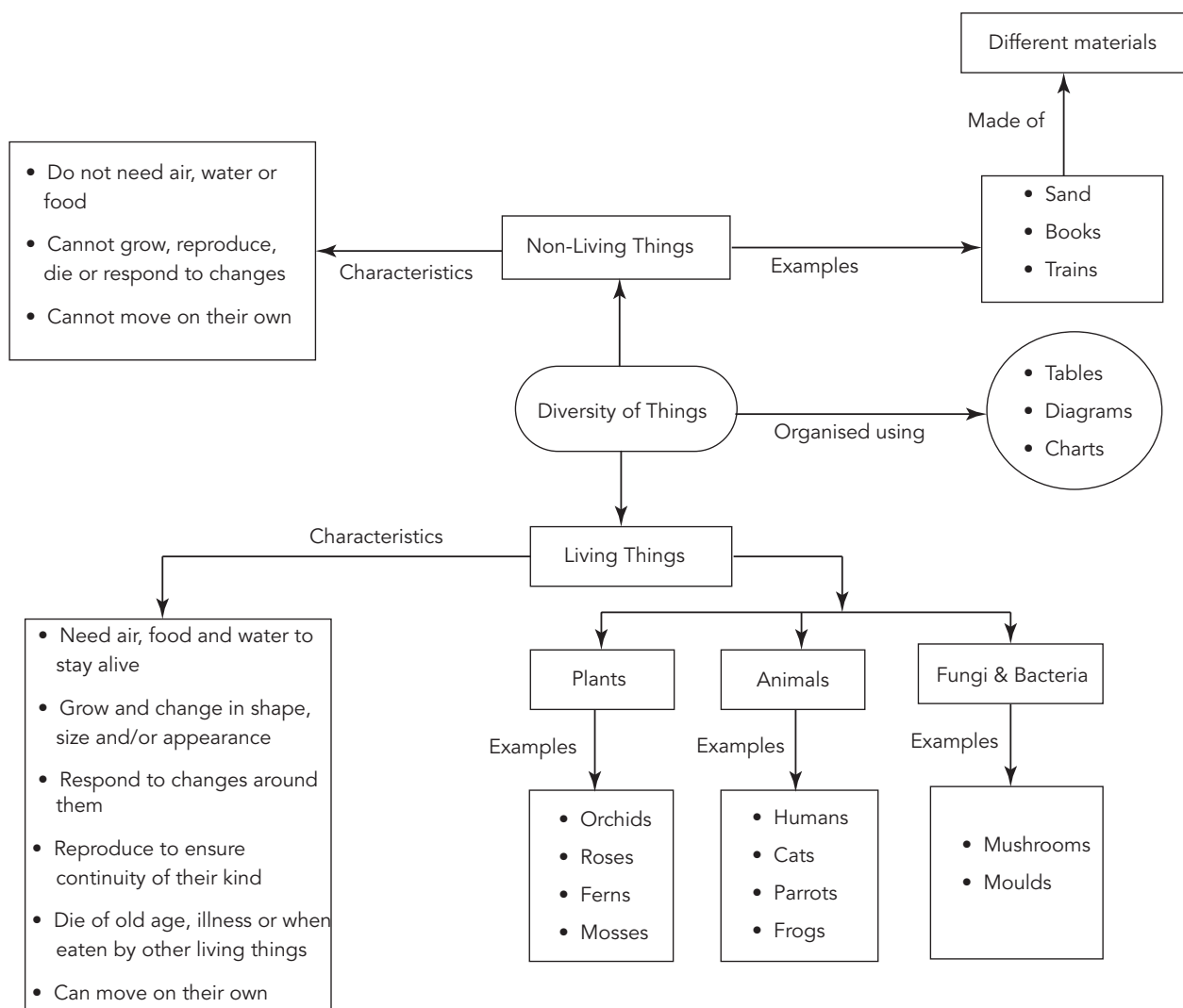
# DIVERSITY

## Unit 1



### Quick Revision

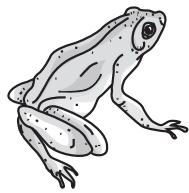
## LIVING AND NON-LIVING THINGS



Section **B**

Read the questions carefully and write the answers in the spaces provided. The marks for each question are given in the brackets.

1 Study things A and B shown below.



**A**



**B**

(a) Write **two** similarities between things A and B. [2 marks]

---

---

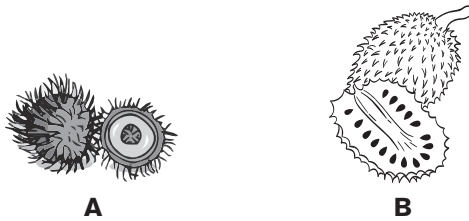
(b) Write **one** difference between things A and B. [2 marks]

---

## Section B

Read the questions carefully and write the answers in the spaces provided. The marks for each question are given in the brackets.

1 Study the fruits, A and B, given below.



(a) State **one** similarity between these fruits. (Your answer should be based only on the pictures provided.) [2 marks]

---

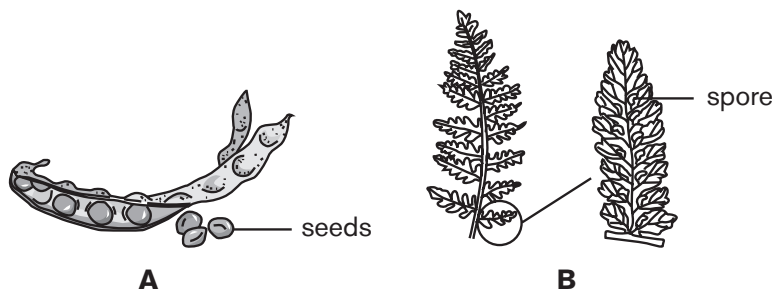
---

(b) State **one** difference between these fruits. (Your answer should be based only on the pictures provided.) [2 marks]

---

---

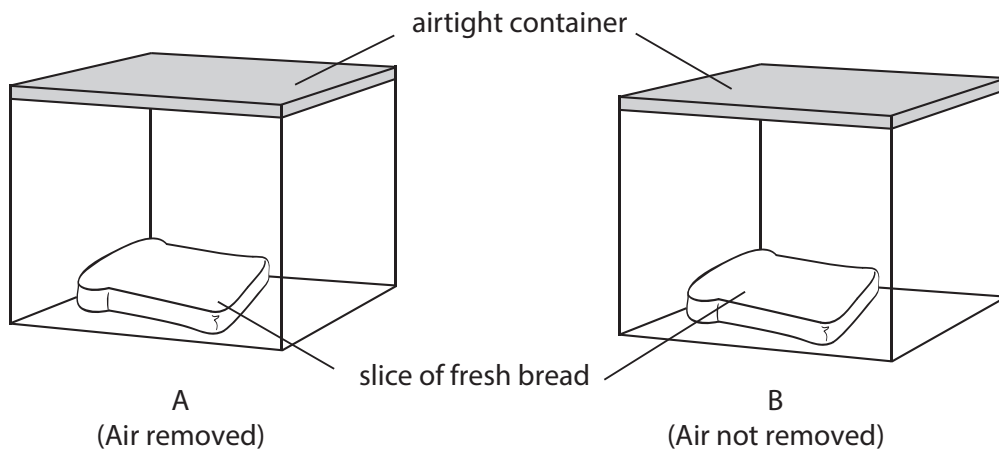
2 Study the plant parts, A and B, given below.



(a) How are these plant parts useful to the plants? [2 marks]

---

- 4 Jane prepared two experiment set-ups as shown below. She sucked out all the air only from container A, before closing the lids of both containers.



- (a) Identify the independent variable in Jane's experiment. [2 marks]

---

- (b) In which container will mould appear on the bread? [1 mark]

---

- (c) What conclusion can you draw from your answer in (b) above? [2 marks]

---

## Section B

Read the questions carefully and write the answers in the spaces provided. The marks for each question are given in the brackets.

1 Study the following statements. Write 'True' or 'False' in the brackets provided. [4 marks]

(a) Plastic bags are not as strong as paper bags. [     ]

(b) Wood and fabric are alike because they are both hard and strong. [     ]

(c) Rubber and plastic do not absorb water. [     ]

(d) Ceramic is strong but brittle. [     ]

2 Study the flowchart below that describes materials A, B, C and D.

