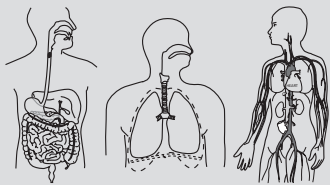


Contents

UNIT - 1	SYSTEMS	01
1.1	<i>Plant Systems</i>	02
1.2	<i>Human Sytems</i>	14
UNIT - 2	CYCLES	26
2.1	<i>Matter</i>	27
	Model Examination Paper 1	39
UNIT - 3	ENERGY	53
3.1	<i>Light and Shadows</i>	54
3.2	<i>Heat and Its Effects</i>	66
	Model Examination Paper 2	79
Answers		93



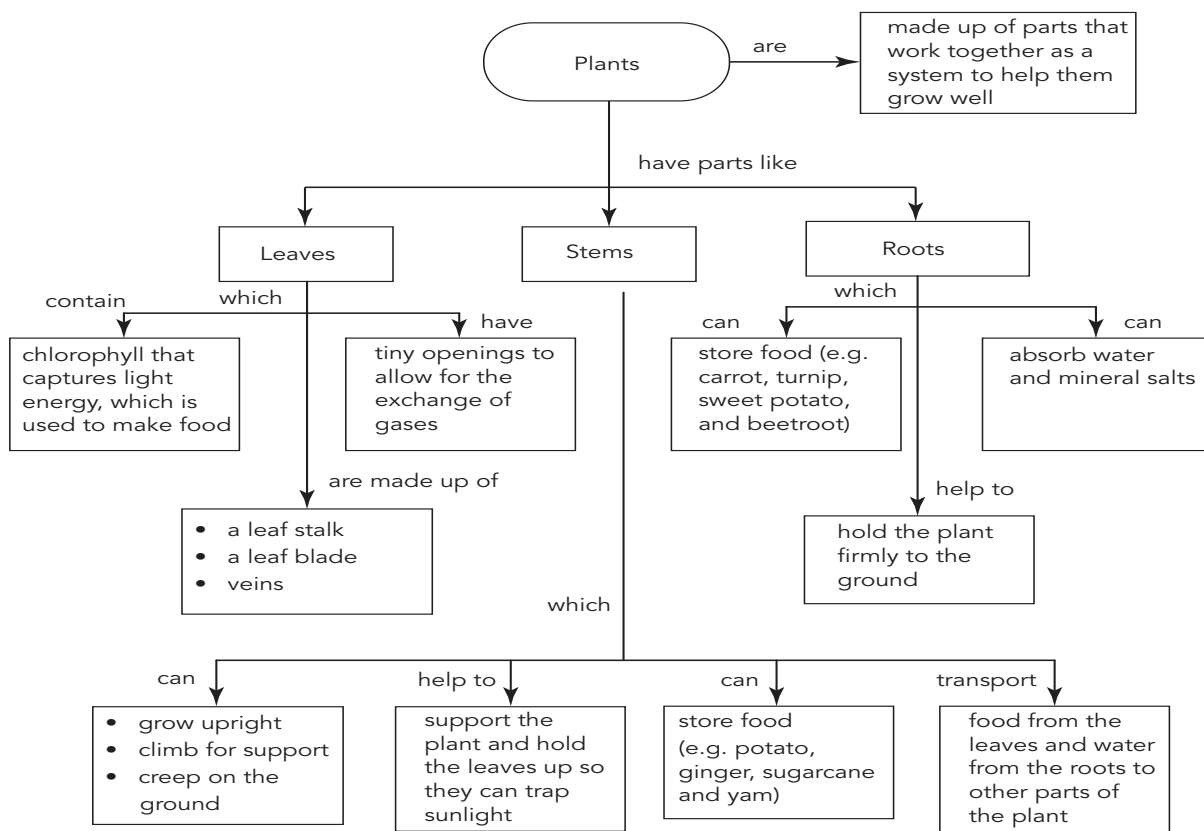
SYSTEMS

Unit 1

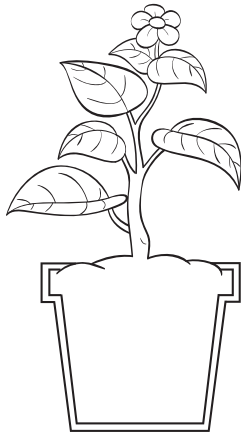


Quick Revision

PLANT SYSTEMS



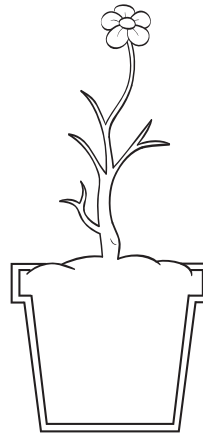
- 11 Wai Lin wanted to find out how long plants can survive without some of their parts. She used four similar plants and removed some of their parts as shown below.



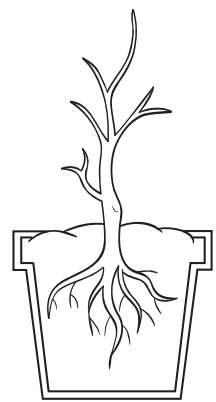
Plant A



Plant B



Plant C



Plant D

Which one of the four plants will stay alive for the longest time?

- (a) Plant A
- (b) Plant B
- (c) Plant C
- (d) Plant D

[]

- 12 Sarah used black paint and painted the underside of all the leaves of a plant. She noticed that the plant died within a short time although she continued to water it every day. Why did Sarah's plant die?

- A:** It could not exchange gases.
- B:** It could not make food.
- C:** It could not trap sunlight.
- D:** It could not absorb water.

- (a) B only
- (c) B and C only

- (b) A and B only
- (d) A, B and D only

[]

(a) What will happen to the water level in both set-ups after a few days?

[2 marks]

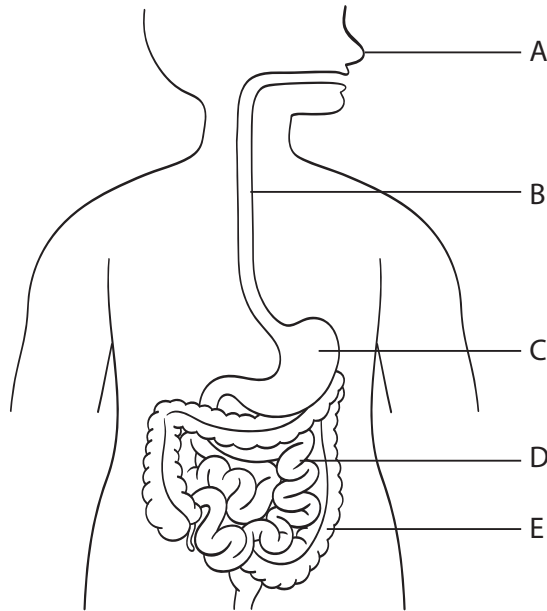
Set-up A: _____

Set-up B: _____

(b) Explain your answers in **(a)** above.

[2 marks]

- 4 The diagram below shows parts of the human body.



- (a) Which of the labelled organs do/does **not** belong to the digestive system?
[1 mark]

- (b) In which **two** labelled organs are digestive juices added to the food?
[2 marks]

- (c) Which organ's function is to only transport food from one organ to another?
[1 mark]
